

SOFT SEATING

Multi-functional, modular seating offers a completely flexible solution for any breakout area by creating a bespoke piece of furniture that can easily be re-sized to suit any office space. The simple, smart components of modular seating ranges can be used individually or arranged in a variety of dynamic configurations, making them ideal for employees and small groups to relax or meet informally.



FABRIC options



Available from stock
Encore² low, Lyric, Nera & Alto

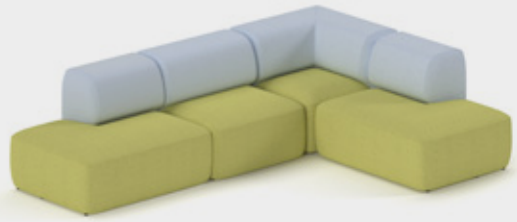


Made-to-Order 4-5
week lead time



ADDISON

PAGE 446



SNUGGLE

PAGE 450



TRINITY

PAGE 454



LYRIC

PAGE 456



ENCORE² LOW

PAGE 458



NERA

PAGE 462



ALTO

PAGE 466



YEALM

PAGE 470

ADDISON

Multi-functional, modular seating offers a completely flexible solution for any breakout area by creating a bespoke piece of furniture that can easily be re-sized to suit any office space. The simple, smart components of modular seating ranges can be used individually or arranged in a variety of dynamic configurations, making them ideal for employees and small groups to relax or meet informally.



SOCIAL SPACES

PRODUCT SPECS



Product guarantee



Designed & manufactured

| | Overall width | Overall depth | Overall height | Seat width | Seat depth | Seat height | Back width | Back height |
|------------------|---------------|---------------|----------------|------------|------------|-------------|------------|-------------|
| ADS004-LH | 715 | 700 | 750 | 500 | 500 | 440 | 500 | 310 |
| ADS004-RH | 715 | 700 | 750 | 500 | 500 | 440 | 500 | 310 |
| ADS005 | 700 | 700 | 750 | 700 | 500 | 440 | 500 | 310 |
| ADS006 | 700 | 700 | 525(750) | 500 | 500 | 440 | 500 | 310 |
| ADS003 | 1370 | 430 | 440 | 500 | 430 | 440 | | |

The patented joints make it possible to join various frame components

Powder coated black frames, durable transparent polycarbonate glides

All polyurethane modules have comfortable shaped cushions to add comfort

Comfortable shaped cushions upholstered in your choice of fabric



| CODE | Fabric bands | | | | |
|--|--------------|------|-------|-------|-------|
| | A | B | C | D | E |
| LEFT HAND SOFA WITH BLACK METAL FRAME AND LEGS | | | | | |
| ADS004-LH | £900 | £950 | £1000 | £1050 | £1110 |



| CODE | Fabric bands | | | | |
|--|--------------|------|-------|-------|-------|
| | A | B | C | D | E |
| RIGHT HAND SOFA WITH BLACK METAL FRAME AND LEG | | | | | |
| ADS004-RH | £900 | £950 | £1000 | £1050 | £1100 |



| CODE | Fabric bands | | | | |
|---|--------------|-------|-------|-------|-------|
| | A | B | C | D | E |
| CORNER SOFA WITH BLACK METAL FRAME AND LEGS | | | | | |
| ADS005 | £950 | £1000 | £1050 | £1100 | £1200 |



| CODE | Fabric bands | | | | |
|------------------------|--------------|------|------|------|------|
| | A | B | C | D | E |
| CENTRAL EXTENSION SOFA | | | | | |
| ADS006 | £600 | £650 | £700 | £750 | £800 |



| | |
|-------------------------------|-----|
| LEG PACK FOR CENTRE EXTENSION | RRP |
| ADSLEG | £75 |

MTO



4-5 week lead time

SOFT SEATING

ADDISON MODULAR



A
ADS004-RH
Right hand sofa

B x 3
ADS006
Central extension sofa

C
ADSLEG
Leg pack for centre extension

D
ADS005
Corner sofa

E
ADS004-LH
Left hand sofa

MTO



4-5 week
lead time

SOFT SEATING

ADDISON MODULAR



A
ADS004-RH
Right hand sofa

B
ADS006
Central extension sofa

E
ADS004-LH
Left hand sofa

F
ADS003
2 seater bench

MTO



4-5 week
lead time

SNUGGLE

Snuggle is one of the most versatile soft seating ranges available, offering a completely flexible solution for any breakout area. The simple, smart components of the Snuggle range can be used individually or arranged in a variety of dynamic configurations, making it the ideal collection for informal meetings, and all working environments now and in the future.



SOCIAL SPACES

PRODUCT SPECS



Product guarantee



Designed & manufactured

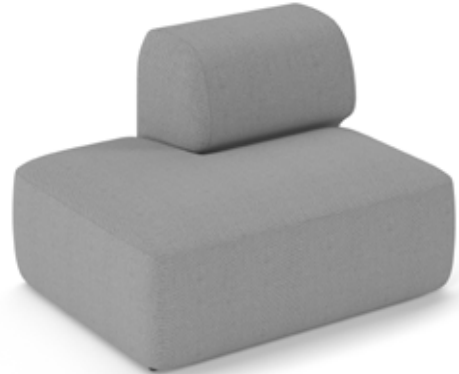
| | Overall width | Overall depth | Overall height | Seat width | Seat depth | Seat height | Back width | Back height |
|-----------------|---------------|---------------|----------------|------------|------------|-------------|------------|-------------|
| SNG001S | 690 | 940 | 440 | 690 | 940 | 440 | | |
| SNG001L | 940 | 940 | 440 | 940 | 940 | 440 | | |
| SNG002S | 690 | 940 | 720 | 690 | 570 | 440 | 690 | 280 |
| SNG002L | 940 | 940 | 720 | 940 | 570 | 440 | 940 | 280 |
| SNG003LH | 1150 | 940 | 720 | 1150 | 570x940 | 440 | 690 | 280 |
| SNG003RH | 1150 | 940 | 720 | 1150 | 570x940 | 440 | 690 | 280 |
| SNG004LH | 940 | 1410 | 720 | 570 | 1040 | 440 | 940 | 280 |
| SNG004RH | 940 | 1410 | 720 | 570 | 1040 | 440 | 940 | 280 |
| SNG005 | 940 | 940 | 720 | 570 | 570 | 440 | 940 | 280 |
| SNG006 | 940 | 940 | 440 | | | | | |

Offering a completely flexible solution for any breakout area

Components can be arranged in a variety of dynamic configurations

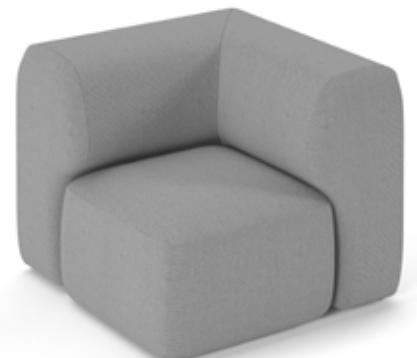
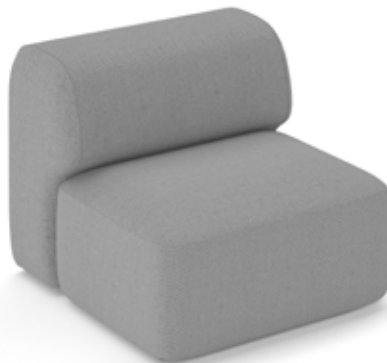
Ideal for employees and small groups to relax or meet informally

Easy to re-configure to suit all work spaces with two-tone fabric options



| CODE | Fabric bands | | | | |
|--|--------------|-------|-------|-------|-------|
| | A | B | C | D | E |
| SNUGGLE MODULAR SOFT SEATING LARGE END SOFA WITH RIGHT HAND BACK | | | | | |
| SNG003RH | N/A | £1300 | £1400 | £1500 | £1600 |

| CODE | Fabric bands | | | | |
|---|--------------|-------|-------|-------|-------|
| | A | B | C | D | E |
| SNUGGLE MODULAR SOFT SEATING LARGE END SOFA WITH LEFT HAND BACK | | | | | |
| SNG003LH | N/A | £1300 | £1400 | £1500 | £1600 |



| CODE | Fabric bands | | | | |
|---|--------------|-------|-------|-------|-------|
| | A | B | C | D | E |
| SNUGGLE MODULAR SOFT SEATING SMALL SOFA | | | | | |
| SNG002S | N/A | £1100 | £1200 | £1300 | £1400 |

| CODE | Fabric bands | | | | |
|---|--------------|-------|-------|-------|-------|
| | A | B | C | D | E |
| SNUGGLE MODULAR SOFT SEATING LARGE SOFA | | | | | |
| SNG002L | N/A | £1150 | £1250 | £1350 | £1450 |

| CODE | Fabric bands | | | | |
|--|--------------|-------|-------|-------|-------|
| | A | B | C | D | E |
| SNUGGLE MODULAR SOFT SEATING CORNER AND END SOFA | | | | | |
| SNG005 | N/A | £1300 | £1400 | £1500 | £1600 |

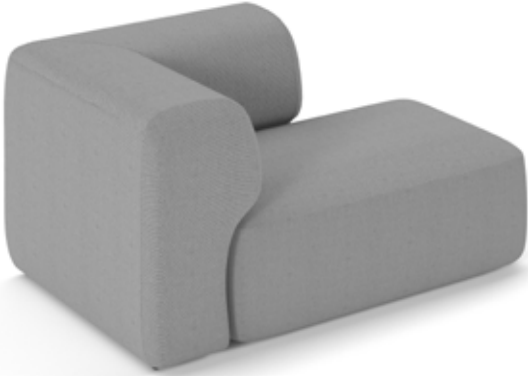
MTO



4-5 week lead time

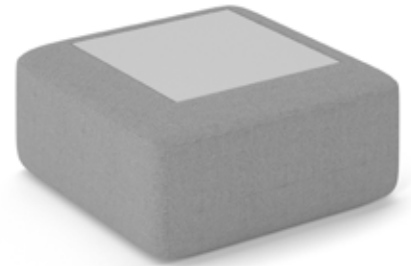
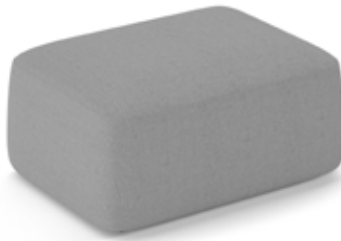
SOFT SEATING

SNUGGLE MODULAR



| CODE | Fabric bands | | | | |
|---|--------------|------|------|------|------|
| | A | B | C | D | E |
| SNUGGLE MODULAR SOFT SEATING LARGE CHASE SOFA WITH LEFT HAND ARM AND BACK | | | | | |
| SNG004LH | N/A | 1500 | 1600 | 1700 | 1800 |

| CODE | Fabric bands | | | | |
|--|--------------|-------|-------|-------|-------|
| | A | B | C | D | E |
| SNUGGLE MODULAR SOFT SEATING LARGE CHASE SOFA WITH RIGHT HAND ARM AND BACK | | | | | |
| SNG004RH | N/A | £1500 | £1600 | £1700 | £1800 |



| CODE | Fabric bands | | | | |
|---|--------------|------|------|-------|-------|
| | A | B | C | D | E |
| SNUGGLE MODULAR SOFT SEATING LARGE SOFA | | | | | |
| SNG001L | N/A | £900 | £950 | £1000 | £1050 |

| CODE | Fabric bands | | | | |
|---|--------------|------|------|------|------|
| | A | B | C | D | E |
| SNUGGLE MODULAR SOFT SEATING SMALL SOFA | | | | | |
| SNG001S | N/A | £700 | £750 | £800 | £850 |

| CODE | Fabric bands | | | | |
|---|--------------|------|------|-------|-------|
| | A | B | C | D | E |
| SNUGGLE MODULAR SOFT SEATING COFFEE TABLE MTO TOP | | | | | |
| SNG006 | N/A | £900 | £950 | £1000 | £1050 |



| | |
|-----------------|-----|
| LINKING BRACKET | RRP |
| SNGLNK | £40 |

MTO



4-5 week lead time

TOP FINISHES



Kendal Oak
-KO



Onyx Grey
-OG



White
-WH

SOFT SEATING

SNUGGLE MODULAR



TRINITY

Trinity seating range is a collection of low and high back modular armchairs and sofas, providing places for personal privacy and reflection, or collaboration and social interaction, in busy open plan work environments.



SPECIFICATION



Product
guarantee



Designed &
manufactured

| | Overall width | Overall depth | Overall height | Seat width | Seat depth | Seat height | Back width | Back height |
|---------------------|---------------|---------------|----------------|------------|------------|-------------|------------|-------------|
| TR-HB1-RW-NA | 1030 | 730 | 1400 | 1000 | 550 | 450 | 1000 | 420 |
| TR-HB1-RW-WA | 1030 | 730 | 1400 | 1000 | 550 | 450 | 1000 | 420 |
| TR-HB1-LW-NA | 1030 | 730 | 1400 | 1000 | 550 | 450 | 1000 | 420 |
| TR-HB1-LW-WA | 1030 | 730 | 1400 | 1000 | 550 | 450 | 1000 | 420 |
| TR-HB1-LU | 1000 | 730 | 1400 | 1000 | 550 | 450 | 1000 | 420 |
| TR-HB2-LU | 1600 | 730 | 1400 | 1600 | 550 | 450 | 1600 | 420 |
| TR-TBL-SQ | 700 | 700 | 400 | | | | | |
| TR-TBL-RC | 1400 | 700 | 400 | | | | | |

Offering a completely flexible solution for any breakout area

Components can be arranged in a variety of dynamic configurations

Ideal for employees and small groups to relax or meet informally

Easy to re-configure to suit all work spaces with two-tone fabric options

No arms



| CODE | Fabric bands | | | | |
|---|--------------|-------|-------|-------|-------|
| | A | B | C | D | E |
| TRINITY HIGH BACK SINGLE RIGHT HAND MODULAR SOFA WITH NO ARMS | | | | | |
| TR-HB1-RW-NA | N/A | £1900 | £2000 | £2200 | £2400 |

| CODE | Fabric bands | | | | |
|---|--------------|-------|-------|-------|-------|
| | A | B | C | D | E |
| TRINITY HIGH BACK SINGLE CENTRAL MODULAR SOFA WITH LINK UNITS | | | | | |
| TR-HB1-LU | N/A | £1700 | £1800 | £2000 | £2200 |

| CODE | Fabric bands | | | | |
|--|--------------|-------|-------|-------|-------|
| | A | B | C | D | E |
| TRINITY HIGH BACK SINGLE LEFT HAND MODULAR SOFA WITH NO ARMS | | | | | |
| TR-HB1-LW-NA | N/A | £1900 | £2000 | £2200 | £2400 |

Arms



| CODE | Fabric bands | | | | |
|--|--------------|-------|-------|-------|-------|
| | A | B | C | D | E |
| TRINITY HIGH BACK SINGLE RIGHT HAND MODULAR SOFA WITH ARMS | | | | | |
| TR-HB1-RW-WA | N/A | £2000 | £2100 | £2200 | £2300 |

| CODE | Fabric bands | | | | |
|---|--------------|-------|-------|-------|-------|
| | A | B | C | D | E |
| TRINITY HIGH BACK DOUBLE CENTRAL MODULAR SOFA WITH LINK UNITS | | | | | |
| TR-HB2-LU | N/A | £2200 | £2350 | £2550 | £2750 |

| CODE | Fabric bands | | | | |
|---|--------------|-------|-------|-------|-------|
| | A | B | C | D | E |
| TRINITY HIGH BACK SINGLE LEFT HAND MODULAR SOFA WITH ARMS | | | | | |
| TR-HB1-LW-WA | N/A | £2000 | £2100 | £2200 | £2400 |



Suffix code with -P to add the power modules

PIP POWER MODULE
RRP £400



| CODE | STOCKED | MTO |
|-----------------------------|---------|------|
| TRINITY SQUARE COFFEE TABLE | | |
| TR-TBL-SQ | £200 | £350 |



| CODE | STOCKED | MTO |
|----------------------------------|---------|------|
| TRINITY RECTANGULAR COFFEE TABLE | | |
| TR-TBL-RC | £300 | £525 |

MTO



4-5 week lead time



Kendal Oak
-KO



Onyx Grey
OG



White
-WH

LYRIC MODULAR

Lyric Modular allows you to add and remove individual elements of the soft seating with ease to create a bespoke piece of furniture that can easily be re-sized to suit any office space, large or small. The Lyric Modular upholstered sofa is ideal for providing employees with an area to relax, whilst maintaining a business feel and providing a level of comfort that lends itself to informal get togethers.



SOCIAL SPACES

PRODUCT SPECS



Product guarantee



Designed & manufactured

| | Overall width | Overall depth | Overall height | Seat width | Seat depth | Seat height | Back width | Back height |
|--------------|---------------|---------------|----------------|------------|------------|-------------|------------|-------------|
| LYRNA | 565 | 820 | 790 | 565 | 510 | 420 | 565 | 410 |
| LYRC | 820 | 820 | 790 | 510 | 510 | 420 | 510 | 410 |
| LYRRA | 740 | 820 | 790 | 580 | 510 | 420 | 580 | 410 |
| LYRLA | 740 | 820 | 790 | 580 | 510 | 420 | 580 | 410 |

Easy to re-configure to suit all work spaces with two-tone fabric options

Multi-functional soft seating system for maximum flexibility

Ideal for informal meetings or large landscapes for public spaces

Made up of 4 large seating options to assemble in multiple configurations



| Fabric bands | | | | | |
|------------------------------------|------|------|------|------|------|
| CODE | A | B | C | D | E |
| CHAIR WITH NO ARMS AND METAL LEGS | | | | | |
| LYRNA-ML | £625 | £675 | £725 | £775 | £825 |
| CHAIR WITH NO ARMS AND WOODEN FEET | | | | | |
| LYRNA-WF | £725 | £775 | £825 | £875 | £925 |



| Fabric bands | | | | | |
|------------------------------|-------|-------|-------|-------|-------|
| CODE | A | B | C | D | E |
| CORNER UNIT WITH METAL LEGS | | | | | |
| LYRC-ML | £925 | £975 | £1025 | £1075 | £1125 |
| CORNER UNIT WITH WOODEN FEET | | | | | |
| LYRC-WF | £1025 | £1075 | £1125 | £1175 | £1225 |



| Fabric bands | | | | | |
|--------------------------------------|------|------|-------|-------|-------|
| CODE | A | B | C | D | E |
| CHAIR WITH RIGHT ARM AND METAL LEGS | | | | | |
| LYRRA-ML | £800 | £850 | £900 | £950 | £1000 |
| CHAIR WITH RIGHT ARM AND WOODEN FEET | | | | | |
| LYRRA-WF | £900 | £950 | £1000 | £1050 | £1100 |



| Fabric bands | | | | | |
|-------------------------------------|------|------|-------|-------|-------|
| CODE | A | B | C | D | E |
| CHAIR WITH LEFT ARM AND METAL LEGS | | | | | |
| LYRLA-ML | £800 | £850 | £900 | £950 | £1000 |
| CHAIR WITH LEFT ARM AND WOODEN FEET | | | | | |
| LYRLA-WF | £900 | £950 | £1000 | £1050 | £1100 |

MTO



4-5 week lead time

ENCORE² MODULAR

The Encore² Modular is as reconfigurable as it is versatile and can be grouped together to create large landscape configurations which are ideal for meetings and reception areas, or to be used as stand-alone pieces. The quality construction and high traffic design deliver an endless array of configurations and the high back units offer comfort and privacy where people can work, team up or gather.



SOCIAL SPACES

PRODUCT SPECS



Product guarantee



Designed & manufactured

| | Overall width | Overall depth | Overall height | Seat width | Seat depth | Seat height | Back width | Back height |
|-------------------------------|---------------|---------------|----------------|------------|------------|-------------|------------|-------------|
| ENC-MOD01L | 600 | 730 | 790 | 600 | 490 | 450 | 590 | 500 |
| ENC-MOD01L-CC | 780 | 730 | 790 | 650 | 490 | 450 | 650 | 500 |
| ENC-MOD02L-CV | 920 | 730 | 790 | 1000 | 490 | 450 | 650 | 500 |
| ENC-MOD02L | 1200 | 730 | 790 | 1200 | 490 | 450 | 1190 | 500 |
| ENC-MOD02L-LA | 1295 | 730 | 790 | 1200 | 490 | 450 | 1190 | 500 |
| ENC-MOD02L-RA | 1295 | 730 | 790 | 1200 | 490 | 450 | 1190 | 500 |
| ENC-MOD01L-PM | 200 | 730 | 790 | | | | | |
| ENC-TAB01 | 600 | 600 | 310 | | | | | |
| ENC-TAB02 | 1000 | 600 | 310 | | | | | |

Offering a completely flexible solution for any breakout area

Components can be arranged in a variety of dynamic configurations

Ideal for employees and small groups to relax or meet informally

Easy to re-configure to suit all work spaces with two-tone fabric options



| CODE | Fabric bands | | | | |
|---|--------------|-------|-------|-------|-------|
| | A | B | C | D | E |
| LOW BACK SOFA WITH BLACK SLED FRAME | | | | | |
| ENC-MOD01L-MF | £770 | £825 | £880 | £935 | £990 |
| LOW BACK SOFA WITH WOODEN SLED FRAME | | | | | |
| ENC-MOD01L-WF | £1100 | £1155 | £1210 | £1265 | £1320 |

| CODE | Fabric bands | | | | |
|---|--------------|-------|-------|-------|-------|
| | A | B | C | D | E |
| CONCAVE LOW BACK SOFA WITH BLACK SLED FRAME | | | | | |
| ENC-MOD01L-CC-MF | £990 | £1045 | £1100 | £1155 | £1210 |
| CONCAVE LOW BACK SOFA WITH WOODEN SLED FRAME | | | | | |
| ENC-MOD01L-CC-WF | £1320 | £1375 | £1430 | £1485 | £1540 |

| CODE | Fabric bands | | | | |
|--|--------------|-------|-------|-------|-------|
| | A | B | C | D | E |
| CONVEX LOW BACK SOFA WITH BLACK SLED FRAME | | | | | |
| ENC-MOD02L-CV-MF | £990 | £1045 | £1100 | £1155 | £1210 |
| CONVEX LOW BACK SOFA WITH WOODEN SLED FRAME | | | | | |
| ENC-MOD02L-CV-WF | £1320 | £1375 | £1430 | £1485 | £1540 |



| CODE | Fabric bands | | | | |
|---|--------------|-------|-------|-------|-------|
| | A | B | C | D | E |
| LOW BACK SOFA WITH NO ARMS & BLACK SLED FRAME | | | | | |
| ENC-MOD02L-MF | £1100 | £1210 | £1320 | £1430 | £1540 |
| LOW BACK SOFA WITH NO ARMS & WOODEN SLED FRAME | | | | | |
| ENC-MOD02L-WF | £1430 | £1540 | £1650 | £1760 | £1870 |

| CODE | Fabric bands | | | | |
|--|--------------|-------|-------|-------|-------|
| | A | B | C | D | E |
| LOW BACK SOFA WITH LEFT ARM & BLACK SLED FRAME | | | | | |
| ENC-MOD02L-LA-MF | £1320 | £1430 | £1540 | £1650 | £1760 |
| LOW BACK SOFA WITH LEFT ARM & WOODEN SLED FRAME | | | | | |
| ENC-MOD02L-LA-WF | £1650 | £1760 | £1870 | £1980 | £2090 |

| CODE | Fabric bands | | | | |
|---|--------------|-------|-------|-------|-------|
| | A | B | C | D | E |
| LOW BACK SOFA WITH RIGHT ARM & BLACK SLED FRAME | | | | | |
| ENC-MOD02L-RA-MF | £1320 | £1430 | £1540 | £1650 | £1760 |
| LOW BACK SOFA WITH RIGHT ARM & WOODEN SLED FRAME | | | | | |
| ENC-MOD02L-RA-WF | £1650 | £1760 | £1870 | £1980 | £2090 |



| CODE | Fabric bands | | | | |
|--|--------------|-------|-------|-------|-------|
| | A | B | C | D | E |
| POWER MODULE DIVIDER WITH BLACK SLED FRAME | | | | | |
| ENC-MOD01L-PM-MF | £1100 | £1155 | £1210 | £1320 | £1430 |
| POWER MODULE DIVIDER WITH WOODEN SLED FRAME | | | | | |
| ENC-MOD01L-PM-WF | £1430 | £1485 | £1540 | £1650 | £1760 |

| CODE | MTO |
|--|------|
| COFFEE TABLE WITH BLACK SLED FRAME | |
| ENC-TAB01-MF | £310 |
| COFFEE TABLE WITH WOODEN SLED FRAME | |
| ENC-TAB01-WF | £671 |

| CODE | MTO |
|--|------|
| LARGE COFFEE TABLE WITH BLACK SLED FRAME | |
| ENC-TAB02-MF | £361 |
| LARGE COFFEE TABLE WITH WOODEN SLED FRAME | |
| ENC-TAB02-WF | £722 |



4-5 week lead time

TOP FINISHES



Laminate
MTO

SOFT SEATING

ENCORE² MODULAR



| CODE | Fabric bands | | | | |
|---------------------------------------|--------------|-------|-------|-------|-------|
| | A | B | C | D | E |
| HIGH BACK SOFA WITH BLACK SLED FRAME | | | | | |
| ENC-MOD01H-MF | £990 | £1045 | £1100 | £1210 | £1320 |
| HIGH BACK SOFA WITH WOODEN SLED FRAME | | | | | |
| ENC-MOD01H-WF | £1320 | £1375 | £1430 | £1540 | £1650 |



| CODE | Fabric bands | | | | |
|---|--------------|-------|-------|-------|-------|
| | A | B | C | D | E |
| CONCAVE HIGH BACK SOFA WITH BLACK SLED FRAME | | | | | |
| ENC-MOD01H-CC-MF | £1320 | £1430 | £1540 | £1650 | £1760 |
| CONCAVE HIGH BACK SOFA WITH WOODEN SLED FRAME | | | | | |
| ENC-MOD01H-CC-WF | £1650 | £1760 | £1870 | £1980 | £2090 |



| CODE | Fabric bands | | | | |
|--|--------------|-------|-------|-------|-------|
| | A | B | C | D | E |
| CONVEX HIGH BACK SOFA WITH BLACK SLED FRAME | | | | | |
| ENC-MOD02H-CV-MF | £1320 | £1430 | £1540 | £1650 | £1760 |
| CONVEX HIGH BACK SOFA WITH WOODEN SLED FRAME | | | | | |
| ENC-MOD02H-CV-WF | £1650 | £1760 | £1870 | £1980 | £2090 |



| CODE | Fabric bands | | | | |
|---|--------------|-------|-------|-------|-------|
| | A | B | C | D | E |
| HIGH BACK SOFA WITH NO ARMS & BLACK SLED FRAME | | | | | |
| ENC-MOD02H-MF | £1430 | £1540 | £1650 | £1760 | £1870 |
| HIGH BACK SOFA WITH NO ARMS & WOODEN SLED FRAME | | | | | |
| ENC-MOD02H-WF | £1760 | £1870 | £1980 | £2090 | £2200 |



| CODE | Fabric bands | | | | |
|--|--------------|-------|-------|-------|-------|
| | A | B | C | D | E |
| HIGH BACK SOFA WITH LEFT ARM & BLACK SLED FRAME | | | | | |
| ENC-MOD02H-LA-MF | £1760 | £1870 | £1980 | £2090 | £2200 |
| HIGH BACK SOFA WITH LEFT ARM & WOODEN SLED FRAME | | | | | |
| ENC-MOD02H-LA-WF | £2090 | £2200 | £2310 | £2420 | £2530 |



| CODE | Fabric bands | | | | |
|---|--------------|-------|-------|-------|-------|
| | A | B | C | D | E |
| HIGH BACK SOFA WITH RIGHT ARM & BLACK SLED FRAME | | | | | |
| ENC-MOD02H-RA-MF | £1760 | £1870 | £1980 | £2090 | £2200 |
| HIGH BACK SOFA WITH RIGHT ARM & WOODEN SLED FRAME | | | | | |
| ENC-MOD02H-RA-WF | £2090 | £2200 | £2310 | £2420 | £2530 |



| CODE | Fabric bands | | | | |
|--|--------------|-------|-------|-------|-------|
| | A | B | C | D | E |
| TALL POWER MODULE DIVIDER WITH BLACK SLED FRAME | | | | | |
| ENC-MOD01H-PM-MF | £1320 | £1430 | £1540 | £1650 | £1760 |
| TALL POWER MODULE DIVIDER WITH WOODEN SLED FRAME | | | | | |
| ENC-MOD01H-PM-WF | £1650 | £1760 | £1870 | £1980 | £2090 |

DIMENSIONS

| | Overall width | Overall depth | Overall height | Seat width | Seat depth | Seat height | Back width | Back height |
|---------------|---------------|---------------|----------------|------------|------------|-------------|------------|-------------|
| ENC-MOD01H | 600 | 730 | 1270 | 600 | 490 | 450 | 590 | 850 |
| ENC-MOD01H-CC | 780 | 730 | 1270 | 650 | 490 | 450 | 650 | 850 |
| ENC-MOD02H-CV | 920 | 730 | 1270 | 1000 | 490 | 450 | 650 | 850 |
| ENC-MOD02H | 1200 | 730 | 1270 | 1200 | 490 | 450 | 1190 | 850 |
| ENC-MOD02H-LA | 1295 | 730 | 1270 | 1200 | 490 | 450 | 1190 | 850 |
| ENC-MOD02H-RA | 1295 | 730 | 1270 | 1200 | 490 | 450 | 1190 | 850 |
| ENC-MOD01H-PM | 200 | 730 | 1270 | | | | | |

MTO



4-5 week lead time

SOFT SEATING

ENCORE² MODULAR



CODE **RRP**
ENC-MOD01L-MF-LG-RB **£770**

LOW BACK SOFA WITH BLACK SLED FRAME
LATE GREY SEAT & RANGE BLUE BACK



CODE **RRP**
ENC-MOD01L-MF-EG-LG **£770**

LOW BACK SOFA WITH BLACK SLED FRAME
ELAPSE GREY SEAT & LATE GREY BACK



CODE **RRP**
ENC-TAB01-MF-KO **£179**

SQUARE COFFEE TABLE WITH BLACK SLED FRAME
KENDAL OAK TOP



CODE **RRP**
ENC-TAB01-MF-WH **£179**

SQUARE COFFEE TABLE WITH BLACK SLED FRAME
WHITE TOP



CODE **RRP**
ENC-TAB02-MF-KO **£205**

RECTANGULAR COFFEE TABLE WITH BLACK SLED FRAME
KENDAL OAK TOP



CODE **RRP**
ENC-TAB02-MF-WH **£205**

RECTANGULAR COFFEE TABLE WITH BLACK SLED FRAME
WHITE TOP

TOP FINISHES



Kendal Oak
-KO



White
-WH



Late Grey / Range Blue
(-LG-RB)



Elapse Grey / Late Grey
(-EG-LG)

STOCKED

NERA

Nera is one of the most versatile soft seating ranges available, offering a completely flexible solution for any breakout area. The simple, smart components of the Nera range can be used individually or arranged in a variety of dynamic configurations, making it the ideal collection for informal meetings, and all working environments now and in the future.



PRODUCT SPECS



Product
guarantee



Designed &
manufactured

| | Overall width | Overall depth | Overall height | Seat width | Seat depth | Seat height | Back width | Back height |
|----------------------|---------------|---------------|----------------|------------|------------|-------------|------------|-------------|
| NERA-D | 1400 | 700 | 430 | 1400 | 510 | 430 | | |
| NERA-D-LB | 1400 | 700 | 790 | 1400 | 510 | 430 | 700 | 440 |
| NERA-D-RB | 1400 | 700 | 790 | 1400 | 510 | 430 | 700 | 440 |
| NERA-D-BB | 1400 | 700 | 790 | 1400 | 510 | 430 | 1400 | 440 |
| NERA-D-BLA | 1400 | 700 | 790 | 1210 | 510 | 430 | 650 | 440 |
| NERA-D-BRA | 1400 | 700 | 790 | 1210 | 510 | 430 | 650 | 440 |
| NERA-D-BBLA | 1400 | 700 | 790 | 1210 | 510 | 430 | 1350 | 440 |
| NERA-D-BBRA | 1400 | 700 | 790 | 1210 | 510 | 430 | 1350 | 440 |
| NERA-D-BRABLA | 1400 | 700 | 790 | 1020 | 510 | 430 | 1300 | 440 |

Versatile and easy to re-configure with frames available in black

Single & double soft seating benches to assemble in multiple configurations

Extra deep high density foam seats for durability and comfort

Suitable for any breakout space with matching coffee tables and power unit



Fabric bands

| CODE | A | B | C | D | E |
|----------------------------------|------|------|------|------|------|
| DOUBLE BENCH WITH NO BACK | | | | | |
| NERA-D | £750 | £800 | £850 | £900 | £950 |



Fabric bands

| CODE | A | B | C | D | E |
|---|------|------|-------|-------|-------|
| DOUBLE BENCH WITH LEFT HAND BACK | | | | | |
| NERA-D-LB | £920 | £970 | £1040 | £1110 | £1200 |



Fabric bands

| CODE | A | B | C | D | E |
|--|------|------|-------|-------|-------|
| DOUBLE BENCH WITH RIGHT HAND BACK | | | | | |
| NERA-D-RB | £920 | £970 | £1040 | £1110 | £1200 |



Fabric bands

| CODE | A | B | C | D | E |
|-------------------------------|------|-------|-------|-------|-------|
| DOUBLE BENCH WITH BACK | | | | | |
| NERA-D-BB | £950 | £1050 | £1150 | £1250 | £1350 |



Fabric bands

| CODE | A | B | C | D | E |
|---|------|-------|-------|-------|-------|
| DOUBLE BENCH WITH LEFT HAND ARM AND BACK | | | | | |
| NERA-D-BLA | £950 | £1020 | £1110 | £1180 | £1280 |



Fabric bands

| CODE | A | B | C | D | E |
|--|------|-------|-------|-------|-------|
| DOUBLE BENCH WITH RIGHT HAND ARM AND BACK | | | | | |
| NERA-D-BRA | £950 | £1020 | £1110 | £1180 | £1280 |



Fabric bands

| CODE | A | B | C | D | E |
|--|-------|-------|-------|-------|-------|
| DOUBLE BENCH WITH LEFT HAND ARM AND FULL BACK | | | | | |
| NERA-D-BBLA | £1150 | £1250 | £1350 | £1450 | £1550 |



Fabric bands

| CODE | A | B | C | D | E |
|---|-------|-------|-------|-------|-------|
| DOUBLE BENCH WITH RIGHT HAND ARM AND FULL BACK | | | | | |
| NERA-D-BBRA | £1150 | £1250 | £1350 | £1450 | £1550 |



Fabric bands

| CODE | A | B | C | D | E |
|---|-------|-------|-------|-------|-------|
| DOUBLE BENCH WITH ARMS AND FULL BACK | | | | | |
| NERA-D-BRABLA | £1500 | £1600 | £1700 | £1800 | £1900 |



Black frame
-K



4-5 week
lead time

SOFT SEATING

NERA



| Fabric bands | | | | | |
|---------------------|------|------|------|------|------|
| CODE | A | B | C | D | E |
| SINGLE BENCH | | | | | |
| NERA-S | £600 | £650 | £700 | £750 | £800 |

| Fabric bands | | | | | |
|--------------------|------|------|------|------|------|
| CODE | A | B | C | D | E |
| CORNER UNIT | | | | | |
| NERA-Q | £407 | £435 | £464 | £494 | £522 |

| Fabric bands | | | | | |
|-------------------|------|------|------|------|------|
| CODE | A | B | C | D | E |
| POWER UNIT | | | | | |
| NERA-PU | £522 | £551 | £580 | £609 | £638 |



| Fabric bands | | | | | |
|-------------------------------|------|------|------|------|-------|
| CODE | A | B | C | D | E |
| SINGLE BENCH WITH BACK | | | | | |
| NERA-S-B | £700 | £775 | £850 | £925 | £1000 |

| Fabric bands | | | | | |
|--|------|------|-------|-------|-------|
| CODE | A | B | C | D | E |
| SINGLE BENCH WITH LEFT ARM AND BACK | | | | | |
| NERA-S-BLA | £800 | £900 | £1000 | £1100 | £1200 |

| Fabric bands | | | | | |
|---|------|------|-------|-------|-------|
| CODE | A | B | C | D | E |
| SINGLE BENCH WITH RIGHT ARM AND BACK | | | | | |
| NERA-S-BRA | £800 | £900 | £1000 | £1100 | £1200 |



| CODE | MTO |
|---------------------|------|
| SQUARE TABLE | |
| NERA-S-TABLE | £348 |

| CODE | MTO |
|---------------------|------|
| CORNER TABLE | |
| NERA-Q-TABLE | £348 |

DIMENSIONS

| | Overall width | Overall depth | Overall height | Seat width | Seat depth | Seat height |
|--------------|---------------|---------------|----------------|------------|------------|-------------|
| NERA-S-B | 700 | 700 | 430 | 700 | 510 | 430 |
| NERA-S-BLA | 700 | 700 | 790 | 600 | 510 | 430 |
| NERA-S-BRA | 700 | 700 | 790 | 600 | 510 | 430 |
| NERA-S | 700 | 700 | 790 | 700 | 510 | 430 |
| NERA-Q | 700 | 700 | 430 | 700 | 700 | 430 |
| NERA-PU | 700 | 250 | 430 | | | |
| NERA-S-TABLE | 700 | 700 | 240 | | | |
| NERA-Q-TABLE | 700 | 700 | 240 | | | |

MTO

TOP FINISHES



Black frame
-K



4-5 week
lead time



Laminate
MTO

SOFT SEATING

NERA



| CODE | DESCRIPTION | RRP |
|-------------------|-------------|------|
| CORNER TABLE | | |
| NERA-Q-TABLE-K-KO | KENDAL OAK | £307 |
| NERA-Q-TABLE-K-WH | WHITE | £307 |



CODE **RRP**
NERA-S-K-K-EG **£600**
 SINGLE BENCH
 ELAPSE GREY SEAT



CODE **RRP**
NERA-D-K-K-EG **£750**
 DOUBLE BENCH
 ELAPSE GREY SEAT



| CODE | DESCRIPTION | RRP |
|-------------------|-------------|------|
| SQUARE TABLE | | |
| NERA-S-TABLE-K-KO | KENDAL OAK | £307 |
| NERA-S-TABLE-K-WH | WHITE | £307 |



CODE **RRP**
NERA-S-B-K-K-EG-RB **£700**
 SINGLE BENCH WITH BACK
 ELAPSE GREY SEAT & RANGE BLUE BACK



CODE **RRP**
NERA-S-B-K-K-EG-EN **£700**
 SINGLE BENCH WITH BACK
 ELAPSE GREY SEAT & ENDURANCE GREEN BACK



CODE **RRP**
NERA-S-B-K-K-EG-LG **£700**
 SINGLE BENCH WITH BACK
 ELAPSE GREY SEAT & LATE GREY BACK



CODE **RRP**
NERA-D-BB-K-K-EG-RB **£950**
 DOUBLE BENCH WITH BACK
 ELAPSE GREY SEAT & RANGE BLUE BACK



CODE **RRP**
NERA-D-BB-K-K-EG-EN **£950**
 DOUBLE BENCH WITH BACK
 ELAPSE GREY SEAT & ENDURANCE GREEN BACK



CODE **RRP**
NERA-D-BB-K-K-EG-LG **£950**
 DOUBLE BENCH WITH BACK
 ELAPSE GREY SEAT & LATE GREY BACK

TOP FINISHES



Kendal Oak
-KO

White
-WH



Elapse Grey
(-EG)



Elapse Grey / Range Blue
(-EG-RB)



Elapse Grey / Endurance Green
(-EG-EN)



Elapse Grey / Late Grey
(-EG-LG)

STOCKED

ALTO

Alto is a modular range of reception furniture that can be customised to fit the specific needs of the modern office, providing comfortable office seating for visitors while they wait. The flexibility of the modular components with curved, straight, left and right hand, corner and upholstered table options allows for multiple configurations without sacrificing on style.



PRODUCT SPECS



Product
guarantee



Designed &
manufactured

| | Overall width | Overall depth | Overall height | Seat width | Seat depth | Seat height | Back width | Back height |
|----------|---------------|---------------|----------------|------------|------------|-------------|------------|-------------|
| ALT50001 | 580 | 640 | 780 | 580 | 490 | 420 | 580 | 360 |
| ALT50002 | 560 | 640 | 780 | 480 | 490 | 420 | 580 | 360 |
| ALT50004 | 770 | 640 | 780 | 490 | 490 | 420 | 580 | 360 |
| ALT50005 | 675 | 640 | 780 | 580 | 490 | 420 | 580 | 360 |
| ALT50006 | 675 | 640 | 780 | 580 | 490 | 420 | 580 | 360 |
| ALT50007 | 675 | 640 | 780 | 580 | 490 | 420 | 580 | 360 |
| ALT50008 | 620 | 620 | 275 | | | | | |
| ALT50009 | 100 | 400 | 200 | | | | | |

Simple, versatile selection of shapes for large and small footprints

Easy to move and re-configure to suit different environments

Deep-foamed seats offering enhanced comfort within relaxation areas

Solid wooden internal construction



| CODE | Fabric bands | | | | |
|-----------------------------------|--------------|------|------|------|------|
| | A | B | C | D | E |
| SINGLE SEATER WITH NO ARMS | | | | | |
| ALT50001 | £316 | £370 | £409 | £429 | £509 |



| CODE | Fabric bands | | | | |
|------------------------------|--------------|------|------|------|------|
| | A | B | C | D | E |
| SINGLE SEATER CONCAVE | | | | | |
| ALT50002 | £328 | £386 | £420 | £443 | £524 |



| CODE | Fabric bands | | | | |
|--------------------------------|--------------|------|------|------|------|
| | A | B | C | D | E |
| SINGLE SEATER WITH ARMS | | | | | |
| ALT50004 | £473 | £577 | £663 | £691 | £800 |



| CODE | Fabric bands | | | | |
|------------------------------------|--------------|------|------|------|------|
| | A | B | C | D | E |
| SINGLE SEATER WITH LEFT ARM | | | | | |
| ALT50005 | £436 | £506 | £562 | £613 | £691 |



| CODE | Fabric bands | | | | |
|-------------------------------------|--------------|------|------|------|------|
| | A | B | C | D | E |
| SINGLE SEATER WITH RIGHT ARM | | | | | |
| ALT50006 | £436 | £506 | £562 | £613 | £691 |



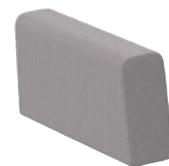
| CODE | Fabric bands | | | | |
|-------------------------------------|--------------|------|------|------|------|
| | A | B | C | D | E |
| SINGLE SEATER CORNER SECTION | | | | | |
| ALT50007 | £612 | £675 | £739 | £805 | £900 |



| CODE | Fabric bands | | | | |
|--------------|--------------|------|------|------|------|
| | A | B | C | D | E |
| TABLE | | | | | |
| ALT50008 | £196 | £223 | £239 | £252 | £293 |



| CODE | Fabric bands | | | | |
|------------------------------------|--------------|------|------|------|------|
| | A | B | C | D | E |
| TABLE WITH ION POWER MODULE | | | | | |
| ALT50008-P | £296 | £323 | £339 | £352 | £393 |



| CODE | Fabric bands | | | | |
|--------------------|--------------|------|------|------|------|
| | A | B | C | D | E |
| ARM CUSHION | | | | | |
| ALT50009 | £150 | £165 | £180 | £195 | £205 |

MTO



4-5 week lead time

SOFT SEATING

ALTO MODULAR



SOFT SEATING

ALTO MODULAR



CODE **RRP**
ALT50001-EG **£300**

SINGLE SEATER WITH NO ARMS
ELAPSE GREY



CODE **RRP**
ALT50001-MB-RB **£300**

SINGLE SEATER WITH NO ARMS
MATURITY BLUE SEAT & RANGE BLUE BASE



CODE **RRP**
ALT50001-PG-FG **£300**

SINGLE SEATER WITH NO ARMS
PRESENT GREY SEAT & FORECAST GREY BASE



CODE **RRP**
ALT50008-EG **£170**

TABLE
ELAPSE GREY



CODE **RRP**
ALT50008-MB **£170**

TABLE
MATURITY BLUE



CODE **RRP**
ALT50008-PG **£170**

TABLE
PRESENT GREY



CODE **RRP**
ALT50008-P-EG **£270**

TABLE WITH ION POWER MODULE
ELAPSE GREY



CODE **RRP**
ALT50008-P-MB **£270**

TABLE WITH ION POWER MODULE
MATURITY BLUE



CODE **RRP**
ALT50008-P-PG **£270**

TABLE WITH ION POWER MODULE
PRESENT GREY

STOCKED - ALT50001



Elapse Grey
(-EG)



Maturity Blue / Range Blue
(-MB-RB)



Present Grey / Forecast Grey
(-PG-FG)

STOCKED - ALT50008



Elapse Grey
(-EG)



Maturity Blue
(-MB)



Present Grey
(-PG)

YEALM

Yealm is a stylish reception soft seating solution with a curved laminated wooden frame and ergonomic back design that allows visitors to wait in comfort whenever they visit the office. This modular seating solution comes with a solid wood top table and a selection of fabric options, so you can custom design the seats to fit your office perfectly in rows of any number of chairs.



PRODUCT SPECS



Product guarantee



Designed & manufactured

| | Overall width | Overall depth | Overall height | Seat width | Seat depth | Seat height | Back width | Back height |
|-----------------|---------------|---------------|----------------|------------|------------|-------------|------------|-------------|
| YEA50001 | 540 | 570 | 890 | 460 | 460 | 380 | 460 | 510 |
| YEA50004 | 540 | 570 | 890 | 460 | 460 | 380 | 460 | 510 |
| YEA50005 | 540 | 570 | 890 | 460 | 460 | 380 | 460 | 510 |
| YEA50006 | 540 | 570 | 890 | 460 | 460 | 380 | 460 | 510 |
| YEA50008 | 910 | 380 | 380 | - | - | - | - | - |

Elegant, flowing lines with a laminated wooden frame

Low arm, high arm, left hand and right hand seating options

Ideal around the matching coffee table in a reception or waiting area

Laminated bent wood frame with clear hard wearing lacquer



| Fabric bands | | | | | |
|--------------|------|------|------|------|------|
| CODE | A | B | C | D | E |
| NO ARMS | | | | | |
| YEA50001 | £425 | £450 | £475 | £500 | £525 |



| Fabric bands | | | | | |
|--------------|------|------|------|------|------|
| CODE | A | B | C | D | E |
| WITH ARMS | | | | | |
| YEA50004 | £425 | £450 | £475 | £500 | £525 |



| Fabric bands | | | | | |
|--------------|------|------|------|------|------|
| CODE | A | B | C | D | E |
| LEFT ARM | | | | | |
| YEA50005 | £425 | £450 | £475 | £500 | £525 |



| Fabric bands | | | | | |
|--------------|------|------|------|------|------|
| CODE | A | B | C | D | E |
| RIGHT ARM | | | | | |
| YEA50006 | £425 | £450 | £475 | £500 | £525 |



| CODE | RRP |
|-------------------|------|
| TABLE YEA50008 | £300 |

MTO



4-5 week lead time



Beech